



02 - 07.2
12.14.GB

CONTROL UNIT **RP 5330**



Pneumatic control unit RP 5330 is designed for control of spring loaded safety valves with additional pneumatic loading (pneumatic actuator), type SiZ 1508 and PV 1509

manufactured by LDM Co. Ltd., Česká Třebová, respective for control of other types of safety valves operated with pneumatic cylinder (B&R, Sempell, etc.). It's more than equal replacement of old unit type SiZ 5320. Regarding the same mechanical main parts (coil springs, control flags, air nozzles, ..), the reliability and accuracy in hard working conditions were preserved. Moreover, the RP 5330 offers new, for the operator very important, functions. For example possibility to set value of opening pressure of control unit during boiler out of operation, possibility to set opening pressure of safety valve according to curve of relation between opening pressure and lifting air pressure (K line).



Description

Base of control unit is robust steel frame, to which all parts are fastened. Four anchor holes (thread M16) are bored into it, for fixing the unit on the wall, boiler steel construction etc. Steel case serves only as a cover, to protect the internal parts against the damage, nonauthorised manipulation and influence of environment (dust, humidity, ..).

There are three tapping line connections in the lower side of the unit (tube 33,7x5 / (32x6), material 1.0425/1.0426/1.7335 (1.0577)). At the upper side of control unit, connection of pressure air (thread M22x1.5 male), cable for solenoid valve control (230V/50Hz) and two connections for lifting and loading air (thread M27x1.5 male) are placed. Pressure air must be delivered continually to the control unit. The cable serves as connection for manual remote control by the boiler operator or for connection between the control unit and the boiler control system. It allows to check the function of control unit and the safety valves too, or to put automatic control above adjusted opening pressure of control unit. Through lifting and loading air connections is the control unit linked with safety valves air cylinder.

Standard admissible ambient temperature is from 0°C to 60°C, higher temperature as option. Design with heating for temperature below 0°C can be asked as option too.

Prior the expedition from production plant, the control unit is adjusted to the opening pressure given in the order. This setting is sealed.

Weight of the control unit is approximately 80 kg.

Operation

The control unit operates connected safety valves by pressure air (lifting and loading). It increases the sealing force on the plug before the opening overpressure is reached. Better valve tightness and long service life is provided by this way. Then, after the adjusted opening overpressure is reached, control unit opens the valve to full lift instantly. When the pressure drops again, the control unit rapidly closes the valve and increases the pressing force on the plug. One control unit can operate max. two safety valves.

Pressure air necessary for operation of control unit is extracted from pressure air line (12) through shut-off valve (13), filter (14) and main pressure reduction valve (15). Pressure is reduced to 0,4 MPa.

One part of pressure air (lifting air) is then supplied through the lifting air pipeline (37) below the piston of pressure air cylinder (3). The control air reduction valve (17) serves to reduce the air pressure to 60 kPa and this, low pressure control air is then supplied to the air nozzles (21). Until the control flags (11) of coil springs (10) brake the air flow between the nozzles, the control air is supplied into three diaphragm valves (22) and keeps them closed. So, the loading air passing through the nozzle (23) fills the space above the piston of pressure air cylinder (3) and its pressure reaches the 0.4 MPa value (i.e. the same pressure as lifting air). Differential piston of pressure air cylinder (3) has a larger effective area in the closing direction and so, in the normal state, the piston acts with additional sealing force to the plug of safety valve (2).

When the pressure in protected device is increased above the adjusted value of the control unit opening overpressure, the coil springs (10) are deformed and their control flags (11) get the position between air nozzles (21). Flow of control air is interrupted, which causes a pressure relief in diaphragm valves (22). Diaphragm valves open and loading air from the space above the piston of air pressure cylinder (3) blows off into atmosphere. As a result of it, the safety valves (2) open to full lift in a very short time because the lifting air acting on the lower side of the piston of air pressure cylinder (3) increases the opening force.

Opening of the safety valves (2) causes pressure drop in the protected device. Subsequently, the coil springs (10) move contrary and control flags (11) protrude back from the spot between the air nozzles (21). Flow of control air is re-created, which causes increasing of air pressure in diaphragm valves (22). The supply of loading air above the piston of air pressure cylinder (3) is restored, which causes rapid closing of safety valve (2).

Requirements for air quality

Pressure air quality must meet ISO 8573-1 standard :

- Class of dust particles 4 or better
(i.e. particle max. size 15 µm, concentration max. 8 mg/m³)
- Class of water 4 or better
(i.e. condensation point max. +3°C)
- Class of oil 3 or better (i.e. concentration max 1mg/m³)

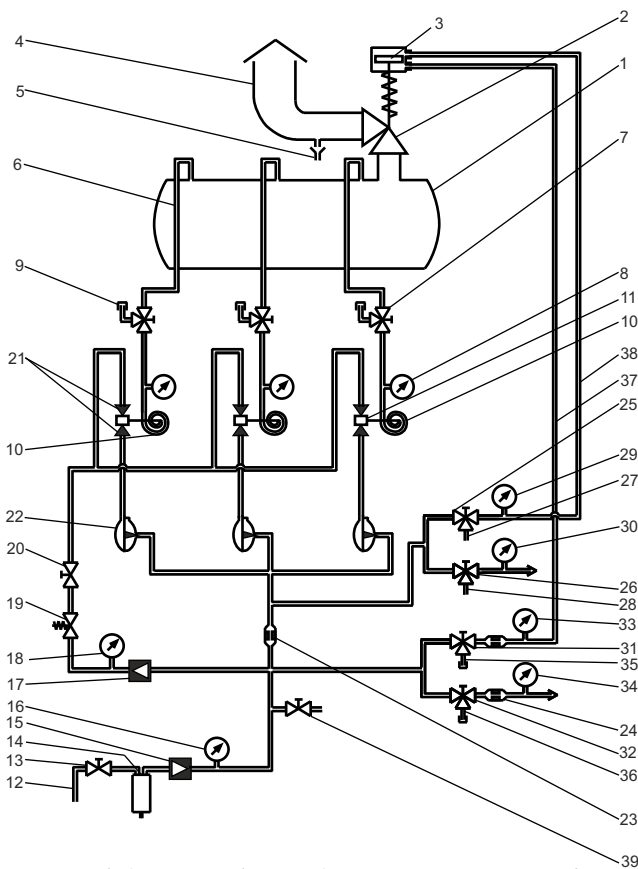
Functional chart of control unit

HP part:

1. Protected appliance
2. Safety valve (SV)
3. Piston of pneumatic actuator
4. Blow-off piping
5. Drain pipe
6. Pressure tapping line
7. Three way shut-off valve
8. Tapping line pressure gauge
9. Connection of independent pressure source
10. Coil springs
11. Control flag

NT part:

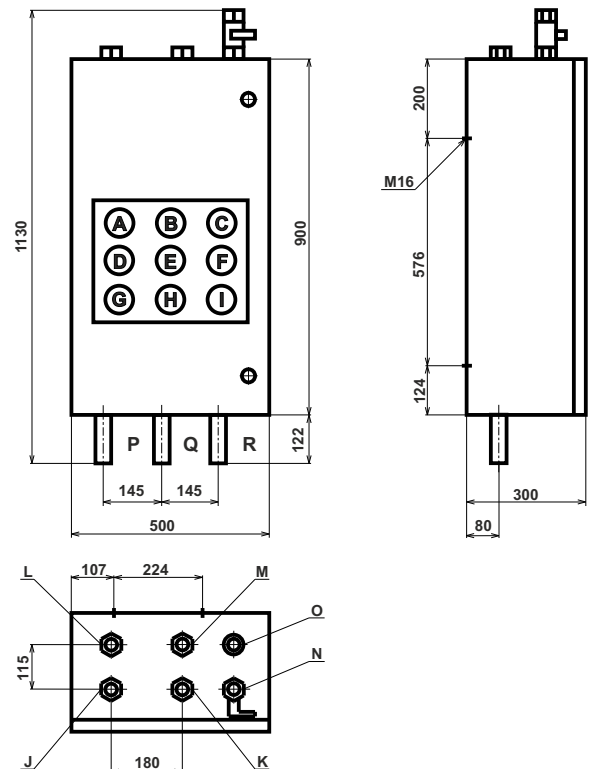
12. Pressure air line
13. Shut-off valve
14. Filter
15. Main pressure reduction valve (6 - 4 barg)
16. Operating air pressure gauge
17. Control air reduction valve (4 - 0.6 barg)
18. Control air pressure gauge
19. Selenoid valve
20. Shut-off valve
21. Air nozzle
22. Diaphragm valve
23. Loading air orifice
24. Lifting air orifice
25. Loading air Three way shut-off valve - 1st safety valve
26. Loading air Three way shut-off valve - 2nd safety valve
27. Loading air discharge - 1st safety valve
28. Loading air discharge - 2nd safety valve
29. Loading air pressure gauge - 1st safety valve
30. Loading air pressure gauge - 2nd safety valve
31. Lifting air Three way shut-off valve - 1st safety valve
32. Lifting air Three way shut-off valve - 2nd safety valve
33. Lifting air pressure gauge - 1st safety valve
34. Lifting air pressure gauge - 2nd safety valve
35. Lifting air external source connection - 1st safety valve
36. Lifting air external source connection - 2nd safety valve
37. Lifting air piping
38. Loading air piping
39. Shut-off control valve (K-linie)



Control unit for controlling 1 safety valve does not contain these positions: 26, 28, 30, 32, 34, 36 a D, E, L, M.

Main dimensions

- A** Lifting air pressure gauge - 1st safety valve
- B** Loading air pressure gauge - 1st safety valve
- C** Operating air pressure gauge
- D** Lifting air pressure gauge - 2nd safety valve
- E** Loading air pressure gauge - 2nd safety valve
- F** Control air pressure gauge
- G** 1st tapping line pressure gauge
- H** 2nd SV tapping line pressure gauge
- I** 3rd tapping line pressure gauge
- J,K** Air connection to 1st safety valve (thread M27x1.5)
- L,M** Air connection to 2nd safety valve (thread M27x1.5)
- N** Shut-off valve (thread M22x1.5)
- O** Remote control connection
- P,Q,R** Tapping lines connection





LDM, spol. s r.o.
Litomyšlská 1378
560 02 Česká Třebová
Czech Republic

tel.: +420 465 502 511
fax: +420 465 533 101
e-mail: sale@ldm.cz

LDM, spol. s r.o.
Office Prague
Podolská 50
147 01 Praha 4
Czech Republic

tel.: +420 241 087 360
fax: +420 241 087 192
e-mail: sale@ldm.cz

LDM, spol. s r.o.
Office Ústí nad Labem
Ladova 2548/38
400 11 Ústí nad Labem
- Severní Terasa
Czech Republic

tel.: +420 602 708 257
e-mail: sale@ldm.cz

LDM servis, spol. s r.o.
Litomyšlská 1378
560 02 Česká Třebová
Czech Republic

tel.: +420 465 502 411-3
fax: +420 465 531 010
e-mail: servis@ldm.cz

LDM Bratislava s.r.o.
Mierová 151
821 05 Bratislava
Slovakia

tel.: +421 2 43415027-8
fax: +421 2 43415029
e-mail: ldm@ldm.sk

LDM, Polska Sp. z o.o.
ul. Bednorza 1
40 384 Katowice
Poland

tel.: +48 32 730 56 33
fax: +48 32 730 52 33
mobile: +48 601 354 999
e-mail: ldmpolska@ldm.cz

LDM Armaturen GmbH
Wupperweg 21
D-51789 Lindlar
Germany

tel.: +49 2266 440333
fax: +49 2266 440372
mobile: +49 177 2960469
e-mail: ldmmarmaturen@ldmvalves.com

OOO "LDM Promarmatura"
Jubilejnyj prospekt,
dom.6a, of. 601
141400 Khimki Moscow Region
Russia

tel.: +7 4957772238
fax: +7 4956662212
mobile: +7 9032254333
e-mail: inforus@ldmvalves.com

TOO "LDM"
Shakirova 33/1
kab. 103
100012 Karaganda
Kazakhstan

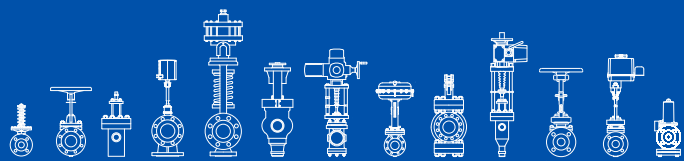
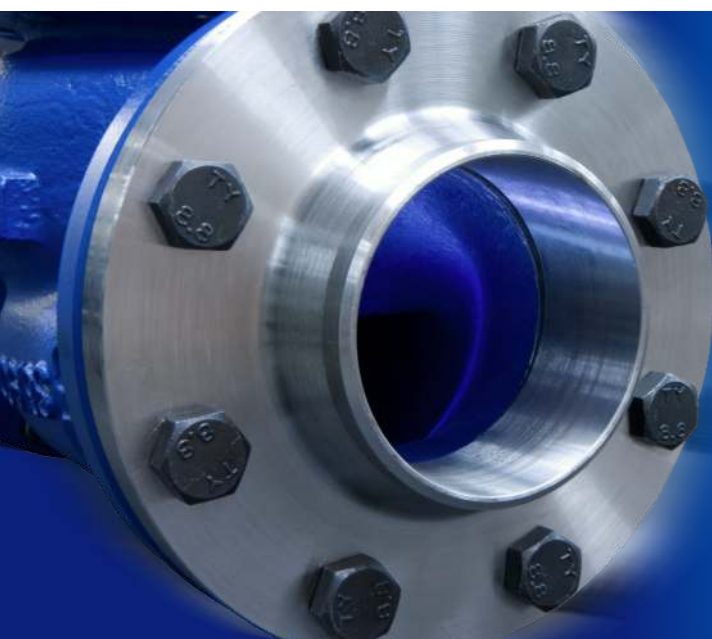
tel.: +7 7212 566 936
fax: +7 7212 566 936
mobile: +7 701 738 36 79
e-mail: sale@ldm.kz

LDM - Bulgaria - OOD
z. k. Mladost 1
bl. 42, floor 12, app. 57
1784 Sofia
Bulgaria

tel.: +359 2 9746311
fax: +359 2 9746311
mobile: +359 888 925 766
e-mail: ldm.bg@ldmvalves.com

www.ldmvalves.com

LDM reserves the right to modify or improve the designs or specifications of such products at any time without notice.



POWER THROUGH IDEAS